



Incentives for Existing Commercial Buildings

Revised March 2005



Project Requirements

- All projects must be *pre-approved* by Salem Electric prior to installation.
- Lighting projects must result in 30% kWh savings.
- Rebates cannot exceed 50% of the total project cost.
- All installed equipment must meet the ESD equipment specifications.
- Existing lamps and ballasts must be disposed of properly.

— Incentives —

Lighting

50% of total cost of project*

Examples of qualifying equipment Includes:

- Replacing T-12 lamps & magnetic ballast with T-8 or T-5 lamps and electronic ballasts.
- Changing mercury vapor or incandescent exterior lighting to metal halide, high pressure sodium, or fluorescent.
- Replace incandescent lamps with compact fluorescents.
- Convert incandescent exit signs to LED or Electro-Luminescent.
- Install occupancy sensors and photo cells.
- Replacing HID lights with T-5 fluorescents.

*Must meet cost control guidelines.

Building Envelope Improvements

\$.30 Per Sq. Ft.

Item	Existing	Proposed
Ceiling/Roof	R-5 or less	R-30
Walls	R-3 or less	R-15
Floor	R-3 or less	R-19
Slab	R-0	R-8

Glass Improvements*

\$2 Per Sq. Ft.

Existing	Proposed
Single Glazed	.40 U-value or less

*Requires a permanently installed electric heating system

HVAC Systems

- Air Conditioning
- Heat Pumps

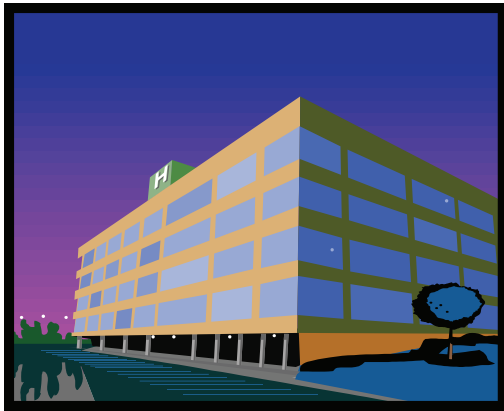
Increasing the efficiency of electric HVAC systems may be included in this program. Incentive levels will be based on calculated energy savings.

Questions?

Call the Member Services Department at 503 362-3601

633 7th Street NW
 PO Box 5588 ♦ Salem OR 97304-0055
 Fax: 503 375-2645
 E-Mail: se@salemelectric.com
salemelectric.com

ENERGYSM SMART DESIGN



Incentives for New Construction & Major Remodel Incentives

Revised March 2005



Incentives Available!

Salem Electric offers incentives to encourage the efficient use of electricity in the construction of new commercial buildings.

Incentives are also available for retrofitting existing commercial buildings by installing approved energy-efficient products.

Salem Electric will pay 50% of the cost (maximum \$ 10,000) of a design study to identify energy saving measures for the project. The study must focus on the electric energy savings above a building built to Oregon code and must include:

- A Project Description
- Estimated Annual KWh Savings (including back-up data)
- Incremental cost of each recommendation (difference between cost built to code and cost of adding energy-efficient measures.

Based on the design study of mutually-agreed upon calculations, Salem Electric will pay 12 cents per annual kWh saved upon completion of the project and inspection by Salem Electric staff.



The following criteria apply:

- *Total Incentive shall not exceed \$100,000 per project or 50% of the incremental costs, whichever is less.*
- *Design study payment will be subtracted from the incentive payment.*

All projects are subject to the availability of funds and must be pre-approved.

Questions?

**Call the Member Services Department
at 503 362-3601**

633 7th Street NW
PO Box 5588 ♦ Salem OR 97304-0055
Fax: 503 375-2645
E-Mail: se@salemelectric.com
salemelectric.com