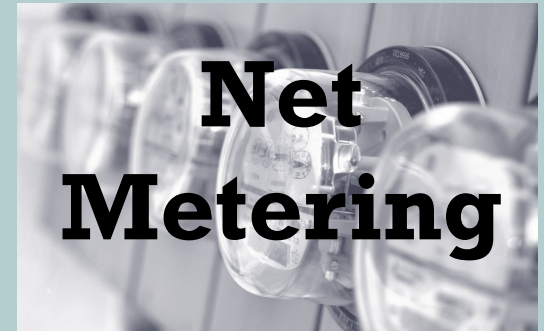


Alternative & Renewable Energy Programs



Net Metering

What Is It?

Steps To Take

**Interconnection
Requirements**



633 7th Street NW
PO Box 5588, Salem, OR 97304-0055

Ph: 503 362-3601

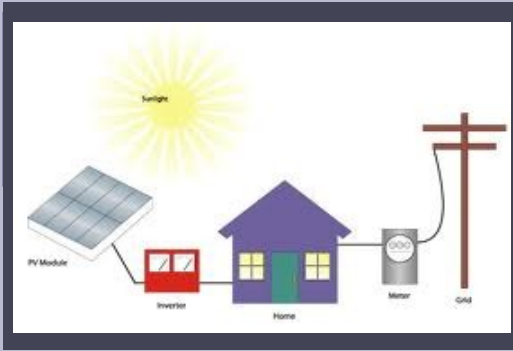
Fax: 503 371-2956

E-mail: se@salemelectric.com
salemelectric.com



● What Is Net Metering?

Net metering measures the difference between the electricity you buy from SE and the electricity you generate using renewable generating equipment.



- Net metering is available to SE members who own and operate a facility that generates electricity from renewable sources.
- Qualified facilities must use one of the following sources to generate electricity:
 - Solar
 - Wind
 - Fuel Cell
 - Hydroelectric Power
 - Landfill gas
 - Digester Gas
 - Waste
 - Dedicated energy crops available on a renewable basis, or low-emission, nontoxic biomass based on solid organic fuels from wood, forest or field residues.

- Facilities are intended to offset or meet all of your own electrical requirements.
- If the facility generates more electricity than you use, SE credits you its avoided cost for wholesale electric power. That means, SE pays you wholesale power costs for any power generated where the net metering facility reduced the need to purchase power.
- The facility must be located on the member's premises and cannot exceed a 25kW generating capacity.

● What's the Next Step?

- Request a copy of SE's Net Metering & Interconnection Agreement. Complete, sign and return the agreement to SE prior to SE's inspection and installation of bi-directional metering.
 - Select an installer. The Oregon Office of Energy's website lists qualified installers to qualify for state tax credits.
- Visit: egov.oregon.gov/ENERGY/**
- Once equipment is installed, send SE a signed copy of the Net Metering & Interconnection Agreement, with a copy of the final electrical inspection notice.
 - Once approved, SE will schedule installation of the metering equipment.

General Interconnection Requirements

- Nameplate generating capacity of twenty-five (25) kilowatts or less located on your premises.
- Interconnects and operates in parallel with existing distribution system.
- Generator responsible for installation and operation of the system including: engineering, design, permits, wiring, and costs associated with SE's requirements.
- System must include disconnection device capable of fully isolating the generator from SE's system located adjacent to the meter and accessible to SE personnel at all times.
- Generation equipment must be maintained in satisfactory operating condition and is the generator's property and responsibility.
- Generator responsible to have the net metering facility inspected and approved by the electrical inspector to confirm it meets all applicable Oregon codes including safety and power quality requirements.
- Facilities must not adversely affect the safety of SE personnel, the reliability or power quality of the utility system.
- Facilities must automatically disconnect from the utility system when power to the utility system is lost.
- Approval for operation in parallel with SE's system must be obtained prior to the operation of any net metering system.